

19 SERIES MOULDED CASE CURRENT TRANSFORMERS

HOBUT

DESCRIPTION

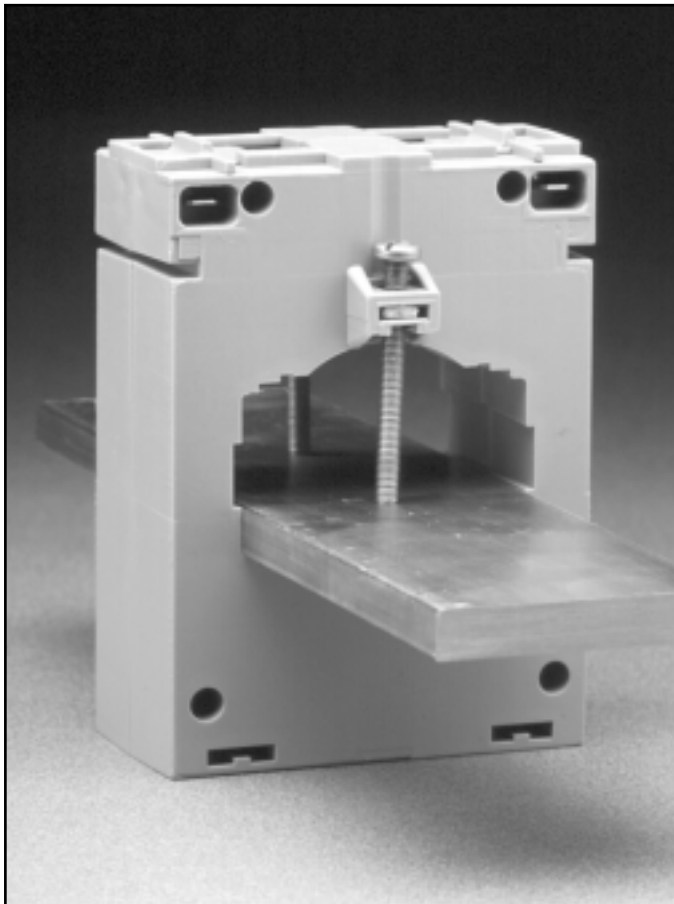
Moulded case current transformers suitable for primary currents from 400 to 2000A.

APPLICATION

For transforming various primary currents into 1A or 5A standard secondary using cable or 60mm maximum width busbars.



CE



FEATURES

- Built-in sliding sealable terminal covers.
- Base or busbar mounting.
- Terminals suitable for screw or push on connectors.
- Narrow width allows close mounting between busbars.

TECHNICAL SPECIFICATION

- Conforms to IEC44-1, IEC 185 and BS7626.
- Rated system voltage 0.72/3kV.
- Ambient temperature range -30°C to 85°C.
- Self extinguishing to UL94HB.
- Enclosure to IP20.
- CE approved.
- Manufactured to ISO9001.

19 SERIES MOULDED CASE CURRENT TRANSFORMERS

HOBUT

TYPE 196

Type: 196-5, 5A Secondary 196-1, 1A Secondary

A	VA CLASS 3				VA CLASS 1				VA CLASS 0.5			
	2.5	5	10	15	2.5	5	10	15	2.5	5	10	15
400	A1	A2	A3	-	A5	A6	-	-	A9	A10	-	-
500	B1	B2	B3	-	B5	B6	B7	-	B9	B10	B11	-
600	C1	C2	C3	C4	C5	C6	C7	C8	C9	C10	C11	C12
800	D1	D2	D3	D4	D5	D6	D7	D8	D9	D10	D11	D12
1000	E1	E2	E3	E4	E5	E6	E7	E8	E9	E10	E11	E12
1200	F1	F2	F3	F4	F5	F6	F7	F8	F9	F10	F11	F12
1500	G1	G2	G3	G4	G5	G6	G7	G8	G9	G10	G11	G12
1600	H1	H2	H3	H4	H5	H6	H7	H8	H9	H10	H11	H12
2000	J1	J2	J3	J4	J5	J6	J7	J8	J9	J10	J11	J12

ORDER EXAMPLE:

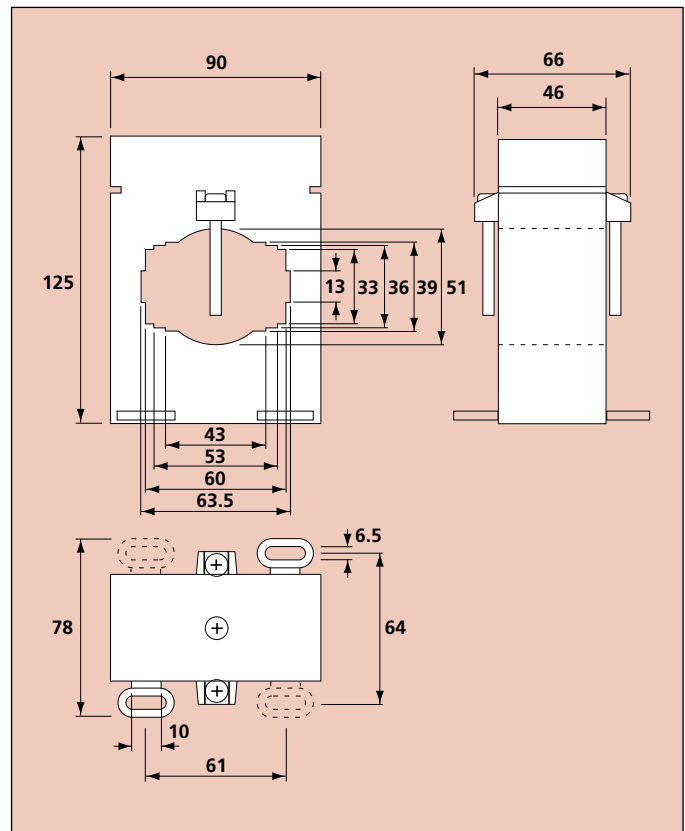
A 400/5A, 2.5VA, class1 current transformer is product code 196-5, A5.

DIMENSIONS

SUITABLE FOR:

Cable or bar primaries. Maximum aperture for circular conductors is 50mm, and two bar conductors 60 x 10mm. Secondary terminals are M5 studs complete with washers, lockwashers and nuts.

Terminals can be sealed if required.



FIXING DETAILS

19 Series current transformers have 2 fixing options: busbar mounting or feet mounting.

Mounting feet: Each current transformer is supplied with 2 push in feet which can be fitted in any of 4 positions.

Busbar mounting: Each current transformer is supplied with a built in busbar clamp and 2 - M3 x 50mm posidrive screws.

Our policy is one of continuous development and therefore specifications may change without notice.

HOWARD BUTLER LTD

CROWN WORKS, LINCOLN ROAD
WALSALL WS1 2EB ENGLAND

Tel: 01922 640003 Fax: 01922 723626

International Tel: +44 1922 640003 E-mail: sales@hobut.co.uk

<http://www.hobut.co.uk>